

# Operations All-Hands Meeting



Glenn D. Kubiak

September 3, 2015

# Pre-Meeting Safety Check



## Our address:

- B50 Auditorium,  
(Seaborg Road)
- LBNL - One  
Cyclotron Road,  
Berkeley, CA 94720

## Our evacuation/assembly point:

- H1 Parking lot

## The nearest AED:

- Around the corner  
to the left as you  
exit the auditorium



## Volunteers:

- Who is CPR certified and willing to perform?
- Who will call 911?
- Who will lead the evacuation?
- Who will meet the emergency vehicles?
- Who will sweep the room?

# Disaster Preparedness



## Have Ready Emergency Supplies to Last 72 Hours

Suggested items for a “Go Kit” Backpack

### Communication

- Flashlight
- Battery powered radio
- Cell phone & charger
- Solar battery charger



### Fuel and Light

- Matches
- Candles



### First Aid Kit

- Bandages
- Medications



### Food and Water

- Pre-packaged and dehydrated food
- Water bottle
- Water purifier
- Infant needs
- Pet needs
- Specialty needs

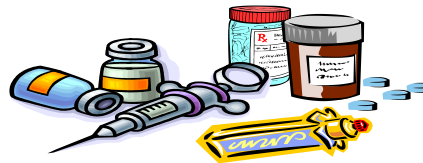


### Shelter

- Sleeping bag/foil blankets
- Plastic sheet/tarp

### Personal Supplies

- toiletries
- towel
- toilet paper



### Clothing and Shoes

- Change of clothing



### Personal Documents

- Address book
- Cash
- Jacket
- Rain gear

### Equipment

- Can opener
- Mess kit
- Eating utensils



# Welcome New Employees!



CFO	Luo,Xinping Nick	Sr Resource Analyst
CFO	McV,Billy S.	Pr Subcontracts Administrator
CFO	Waters,Emmanuel J.	Pr Subcontracts Administrator
CFO	Owens,Sonya Ann	Sr Subcontracts Administrator
EH&S	Touhey,Joanne	Business/Systems Analyst 4
EH&S	Goodwin,Kevin E	Construction Safety Spec. 4
EH&S	Sutton,Haley	Student Assistant
FCLT	Lindberg,Steven	Facilities Engineering Mgmt 2
FCLT	Arias,Michael S	Plant Maintenance Tech Princ
FCLT	Gray,Michael	Administrator
FCLT	Herrera,Juan	Air Cond/Refrig Mech
FCLT	De Leon,MacArthur	Custodian
FCLT	Millett,James Peter	Custodian
FCLT	Kranz,Darren Robert	Air Cond/Refrig Mech
FCLT	Delgado,Fabiola Del Carmen	Custodian
FCLT	Griffin,Deandre	Custodian
IT	Wong,Kevin	Computer Systems Engineer 3
IT	Tura,Patricia L	Program Manager 4

# Welcome Kem Robinson!



## Laboratory Project Management Officer

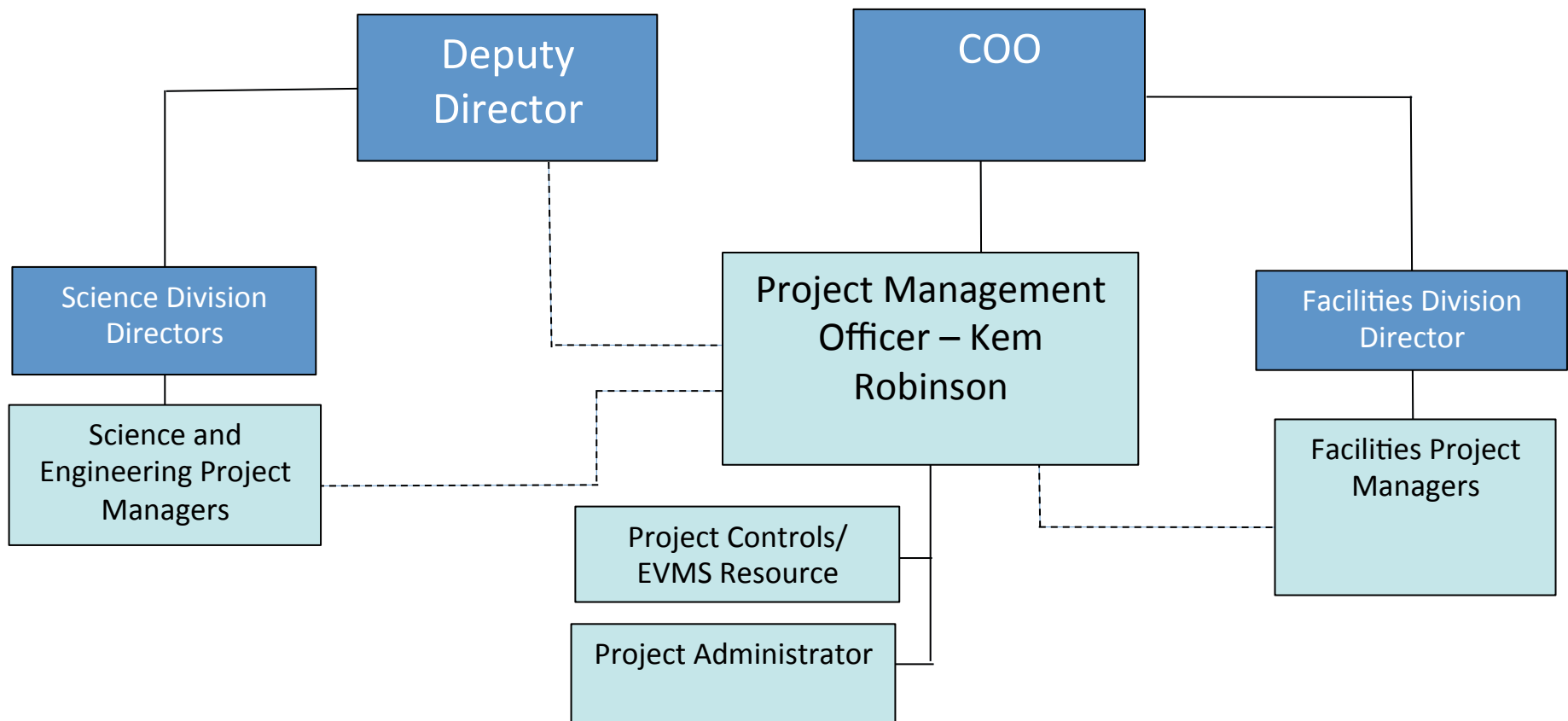


# Project Management Office Responsibilities Expanded and Reorganized



**Objective: Increase effectiveness of Berkeley Lab project management to ensure project success on current and future strategic projects**

- Create full-time PMO to provide dedicated oversight of strategic projects
- Provide resources and oversight for disciplined, consistently effective PM approach across different project types, funding sources, etc



# GPL Occupancy Nearly Complete



- Move Schedule
  - 6/01 – 1<sup>st</sup> Floor Offices (JCAP) **Completed**
  - 6/10 – 3<sup>rd</sup> Floor Offices, Labs (PBD) **Completed**
  - 7/13 – 1<sup>st</sup> Floor Offices, Labs (JCESR) **Completed**
  - 08/03 – 2nd Floor (LSD) **Completed**
  - 08/28 (tentative) – 3<sup>rd</sup> Floor Offices, Labs (MSD)
- Pre-move fit-up work substantially complete, MSD Ceder fit-ups underway





# CRT = Wang Hall; NERSC 8 Installed



**Substantial Completion achieved - May 15, 2015**  
**Commissioning complete - July 31, 2015**  
**Notable outcome achieved! – August 29, 2015**

## Status of Work:

- Contractor provided training complete
- Punch list work ~94% complete
- Compiling close out documentation

## Program Work:

- NRP CD4 approval received
- Completed electrical and mechanical site prep
- Installation of Phase 1 Computer systems complete

Total Budget: \$143M



High Performance Computers being installed in CRT  
August 24, 2015





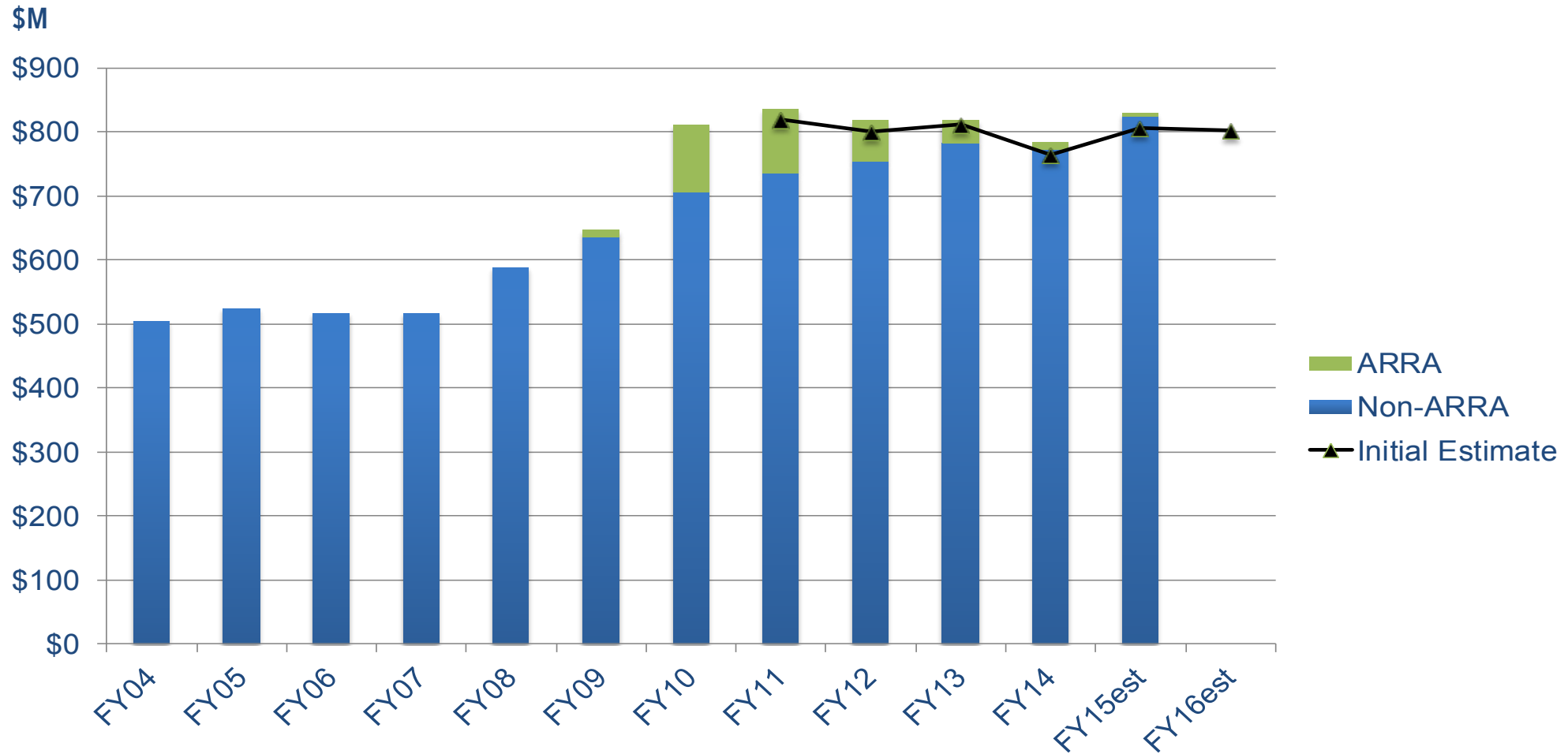
# IGB Project - Next Steps



- CEQA comment period passed with no challenges.
- Completed review of the Schematic Design 50% Design Development scheduled to be received August 27
- CD-2 review scheduled for Nov 17 – 19.
- Rudolph & Sletten selected for CM/GC contract. Constructed Molecular Foundry
- Complete Construction Documents on schedule for March 2016
- Early start Construction Summer 2016
- Estimate 24 months of construction
- IGB Early Finish Construction Complete ~ Fall 2018



# Costs Must be Carefully Managed Particularly when Budgets are Flat

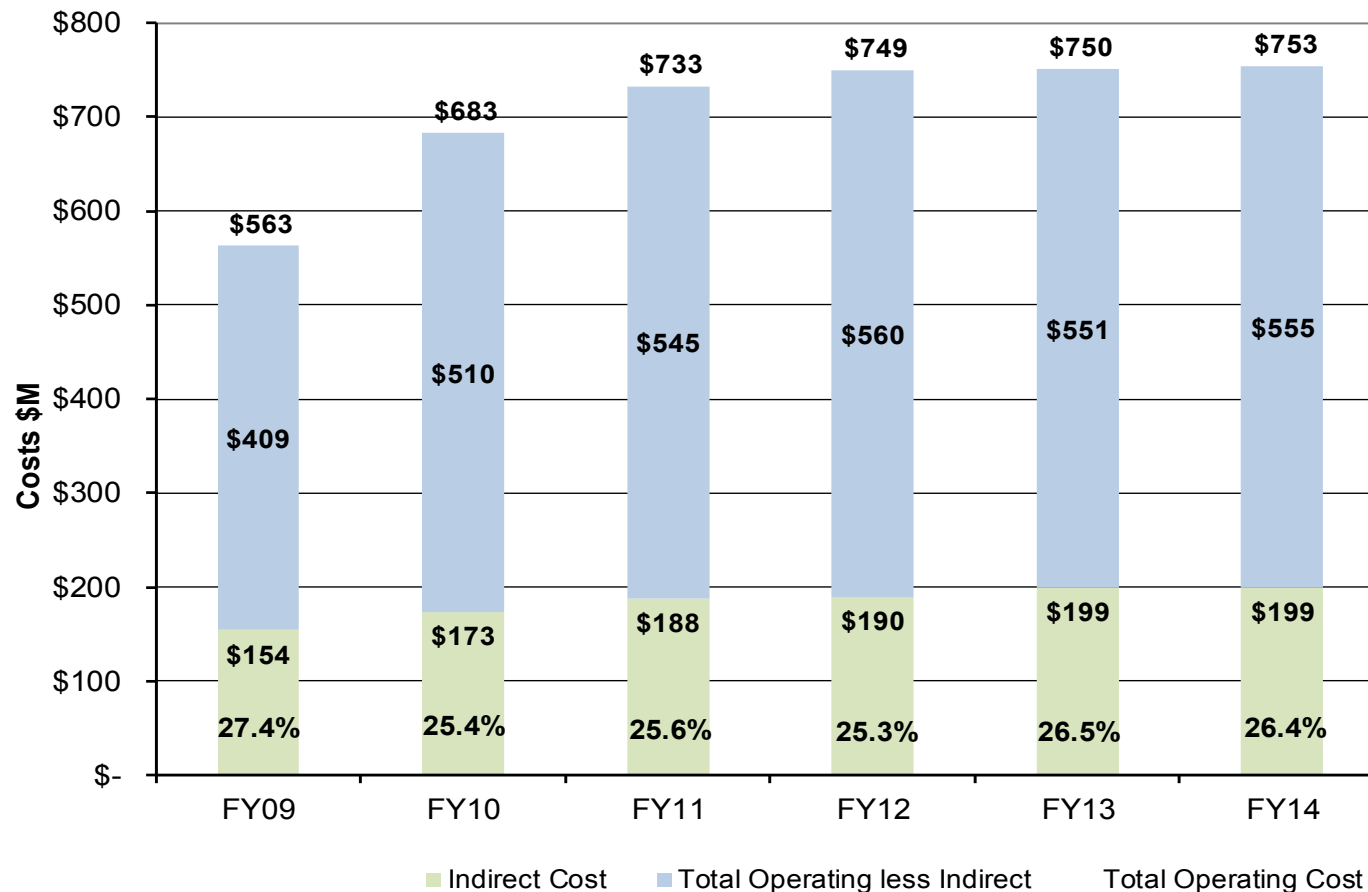


# FY09 – FY14 Operating Costs

9/4/15 | 11



## Institutional Overhead Costs as Percentage of Total Direct Operating Costs



Note: Institutional overhead costs include G&A, LDRD, Site Support, Travel, Procurement, and IGPP. Percent is the percentage of indirect cost to total operating cost.



# UCOP Climate Survey and Operations Listening Project



## Challenges / Themes

- Employees not comfortable speaking up
- Diverse interests and needs
- Employees want to contribute / feel their work and Laboratory's mission are important

## Priorities for FY16

- Improve skills to:
  - Speak up more effectively
  - Be aware of unintended biases
- Workshop series for:
  - Leaders and Supervisors
  - Employees
- Create Employee Resource Groups

# Employee Resource Groups (ERGs)



- Employee association organized around a primary diversity dimension
- Help foster an environment of inclusiveness and contribute to employee pride
- Help build and maintain positive relationships with and between our communities

**ERGs are Open to All Employees**

# Berkeley Lab's ERGs



- Two ERGs have been created, a third will launch very soon in FY15

- Veterans
- Lambda Alliance
- Disability Inclusion



- Two more ERGs planned in FY16
  - African American/Black
  - Hispanic/Latino



Contact [DIO@lbl.gov](mailto:DIO@lbl.gov) for information



# Questions, Comments?



# THANK YOU!